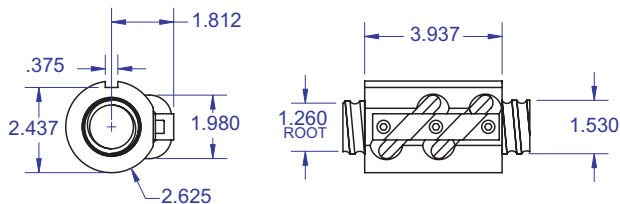


BALL SCREWS

KEYWAYS

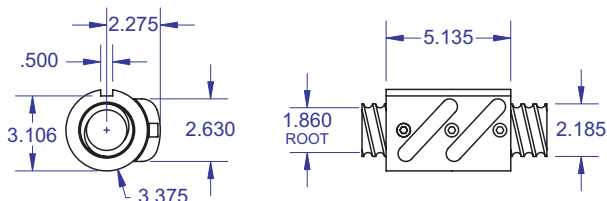


R50 Keyway Ball Screw



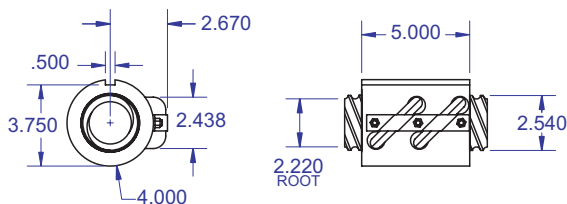
Ball bearing nominal diameter 5/16". Average ball quantity per nut is 102.

R60 Keyway Ball Screw



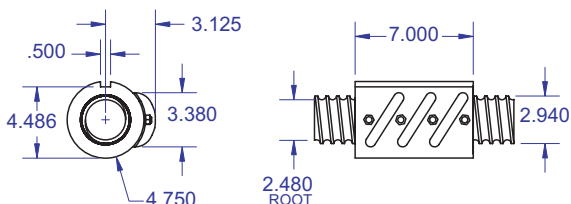
Ball bearing nominal diameter 3/8". Average ball quantity per nut is 154.

R70 Keyway Ball Screw



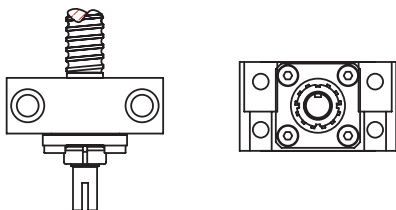
Ball bearing nominal diameter 3/8". Average ball quantity per nut is 186.

R80 Keyway Ball Screw



Ball bearing nominal diameter 1/2". Average ball quantity per nut is 177.

Bearing Mount



PLEASE NOTE

Technical drawings and information can vary depending on which Bearing Mount is desired. See pages 80-85 for details.

Keyway Nuts

R50 Keyway Ball Screw

Ball Screw Part #	R-50-1
Ball Nut Part #	R-50-2KW
Dynamic Load (lbs) for 1,000,000 (in)	9,050
Max. Static Load (lbs)	55,000
Ballnut Weight (lbs)	4.18
Ballscrew Weight (lbs/ft)	5.34

R60 Keyway Ball Screw

Ball Screw Part # RH	R-60-1
Ball Nut Part # RH	R-60-2KW
Dynamic Load (lbs) for 1,000,000 (in)	19,800
Max. Static Load (lbs)	142,500
Ballnut Weight (lbs)	8.25
Ballscrew Weight (lbs/ft)	10.92

R70 Keyway Ball Screw

Ball Screw Part #	R-70-1
Ball Nut Part #	R-70-2KW
Dynamic Load (lbs) for 1,000,000 (in)	22,000
Max. Static Load (lbf)	155,500
Ballnut Weight (lbs)	12.09
Ballscrew Weight (lbs/ft)	14.98

R80 Keyway Ball Screw

Ball Screw Part #	R-80-1
Ball Nut Part #	R-80-2KW
Dynamic Load (lbs) for 1,000,000 (in)	42,000
Max. Static Load (lbs)	260,000
Ballnut Weight (lbs)	25.02
Ballscrew Weight (lbs/ft)	19.43

WANT MORE PRODUCTS?

Visit our web site at **R/B/S**
www.rockfordballscrew.com. ●●●

The specifications and data in this publication are deemed to be accurate and reliable and are subject to change without notice.