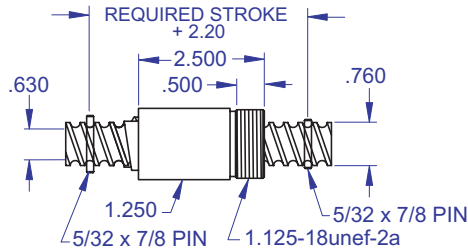


# FREEWHEELING



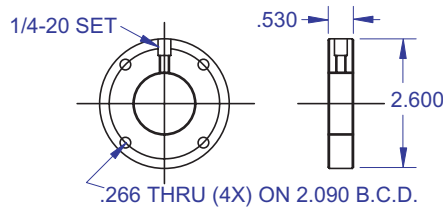
## R4

### R4 Freewheeling Ball Screw



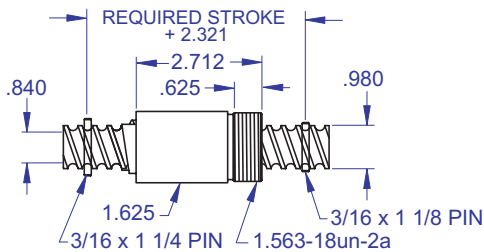
Ball bearing nominal diameter 5/32". Ball quantity per nut is 12.

### R4 Mounting Flange



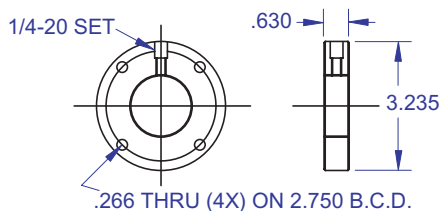
## R6

### R6 Freewheeling Ball Screw



Ball bearing nominal diameter 3/16". Ball quantity per nut is 12.

### R6 Mounting Flange



**3/4 x .200**  
DIAMETER EFFECTIVE LEAD

### Freewheeling Ball Screw

Ball Screw Part #	R04-1
Ball Nut Part #	R04-2
Dynamic Load (lbs) for 1,000,000 (in)	450

### Accessories

Mounting Flange Part #	R04-3
Bearing Mount Part #	see pages 80-85

**1.00 x .200**  
DIAMETER EFFECTIVE LEAD

### Freewheeling Ball Screw

Ball Screw Part #	R06-1
Ball Nut Part #	R06-2
Dynamic Load (lbs) for 1,000,000 (in)	900

### Accessories

Mounting Flange Part #	R06-3
Bearing Mount Part #	see pages 80-85

### WANT MORE PRODUCTS?

Visit our web site at **R/B/S**  
www.rockfordballscrew.com. ●/●/●

The specifications and data in this publication are deemed to be accurate and reliable and are subject to change without notice.