

5/8 x .188
 DIAMETER EFFECTIVE LEAD

FREEWHEELING

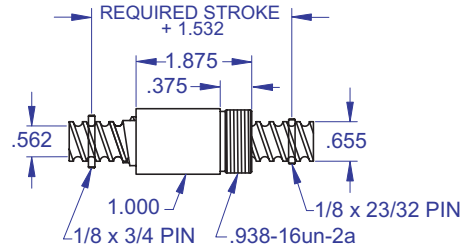


R1

Freewheeling Ball Screw

Ball Screw Part #	R01-1
Ball Nut Part #	R01-2
Dynamic Load (lbs) for 1,000,000 (in)	300

R1 Freewheeling Ball Screw

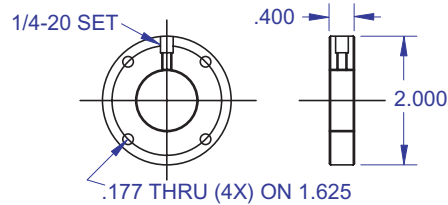


Ball bearing nominal diameter 1/8". Ball quantity per nut is 12.

Accessories

Mounting Flange Part #	R01-3
Bearing Mount Part #	see pages 80-85

R1 Mounting Flange



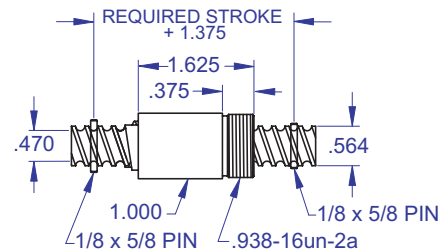
9/16 x .200
 DIAMETER EFFECTIVE LEAD

Freewheeling Ball Screw

Ball Screw Part #	R02-1
Ball Nut Part #	R02-2
Dynamic Load (lbs) for 1,000,000 (in)	150

R2

R2 Freewheeling Ball Screw

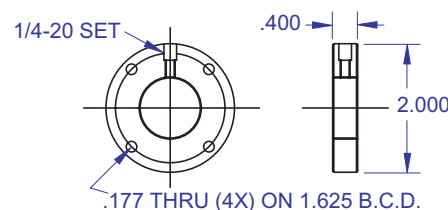


Ball bearing nominal diameter 1/8". Ball quantity per nut is 6.

Accessories

Mounting Flange Part #	R02-3
Bearing Mount Part #	see pages 80-85

R2 Mounting Flange



WANT MORE PRODUCTS?

R/B/S Visit our web site at
www.rockfordballscrew.com

The specifications and data in this publication are deemed to be accurate and reliable and are subject to change without notice.