

**4.000 x 1.000**  
DIAMETER LEAD

# BALL SCREWS

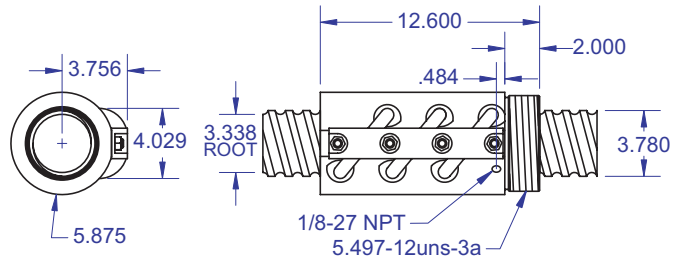
## R90/R91



### Standard Ball Screw

Ball Screw Part # RH	R-90-1	
Ball Screw Part # LH		R-91-1
Ball Nut Part # RH	R-90-2	
Ball Nut Part # LH		R-91-2
Dynamic Load (lbs) for 1,000,000 (in)	85,000	85,000
Max. Static Load (lbs)	476,950	476,950
Ballnut Weight (lbs)	41.07	41.07
Ballscrew Weight (lbs/ft)	31.90	31.90

### Standard Ball Screw

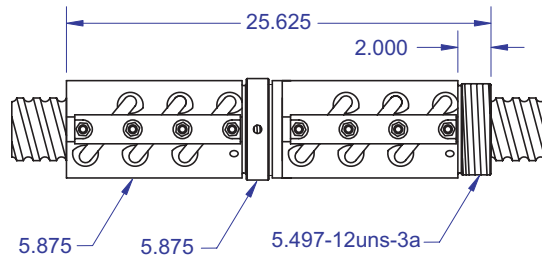


Ball bearing nominal diameter 5/8". Average ball quantity per nut is 186.

### Preloaded Ball Screw

Preload Screw Part # RH	RP-90-1	
Preload Screw Part # LH		RP-91-1
Preload Ballnut Part # RH	RP-90-2	
Preload Ballnut Part # LH		RP-91-2
Dynamic Load (lbs)** for 1,000,000 (in)	76,500	76,500
Max. Static Load (lbs)**	468,450	468,450
Recommended Preload	8,500	8,500
Maximum Preload	25,500	25,500
Ballnut Weight (lbs)	82.14	82.14

### Preloaded Ball Screw

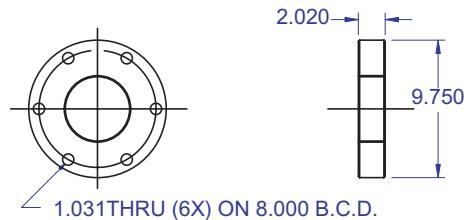


\*\*Based on recommended Preload.

### Accessories

Mounting Flange Part #	R-90-3	R-91-3
Wiper Kit Part #	R-90-4	R-91-4

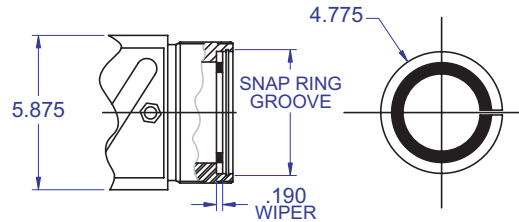
### Mounting Flange



### Technical Info:

Bearing Mounts and Machined Ends page 80-85  
 Lubrication information page 15  
 On-line Resources page 3  
 (configurable CAD drawings and more)

### Wiper Kit



### WANT MORE PRODUCTS?

**R/B/S** Visit our web site at [www.rockfordballscrew.com](http://www.rockfordballscrew.com).

The specifications and data in this publication are deemed to be accurate and reliable and are subject to change without notice.

#### PLEASE NOTE

Technical drawings and information can vary depending on which Bearing Mount is desired. See pages 80-85 for details.

