

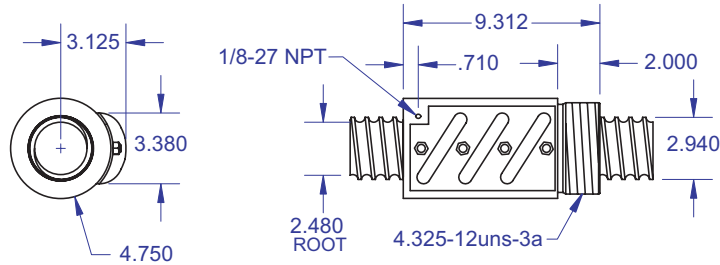
BALL SCREWS



R80

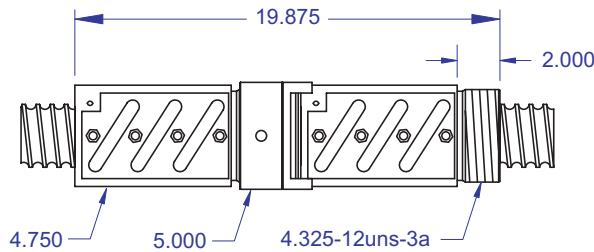
3.000 x .660
DIAMETER LEAD

Standard Ball Screw



Ball bearing nominal diameter 1/2". Average ball quantity per nut is 177.

Preloaded Ball Screw



Standard Ball Screw

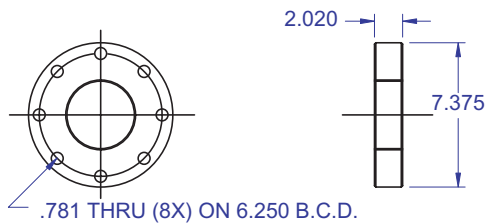
Ball Screw Part #	R-80-1
Ball Nut Part #	R-80-2
Dynamic Load (lbs) for 1,000,000 (in)	42,000
Max. Static Load (lbs)	260,000
Ballnut Weight (lbs)	25.02
Ballscrew Weight (lbs/ft)	19.43

Preloaded Ball Screw

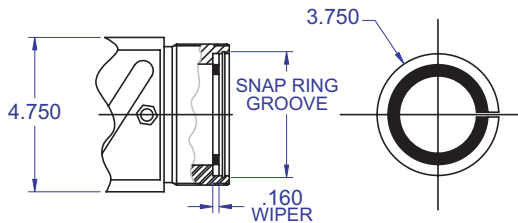
Preload Screw Part #	RP-80-1
Preload Ballnut Part #	RP-80-2
Dynamic Load (lbs)** for 1,000,000 (in)	37,800
Max. Static Load (lbs)**	255,800
Recommended Preload	4,200
Maximum Preload	12,600
Ballnut Weight (lbs)	50.04

*Based on recommended Preload.

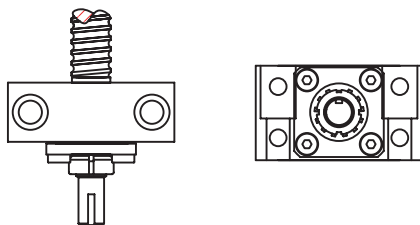
Mounting Flange



Wiper Kit



Bearing Mount



PLEASE NOTE

Technical drawings and information can vary depending on which Bearing Mount is desired. See pages 80-85 for details.

Accessories

Mounting Flange Part #	R-80-3
Wiper Kit Part #	R-80-4

Technical Info:

Bearing Mounts and Machined Ends	page 80-85
Lubrication information	page 15
On-line Resources (configurable CAD drawings and more)	page 3

WANT MORE PRODUCTS?

Visit our web site at **R/B/S**
www.rockfordballscrew.com. ●/●/●

The specifications and data in this publication are deemed to be accurate and reliable and are subject to change without notice.