

2.250 x .500
DIAMETER LEAD

BALL SCREWS

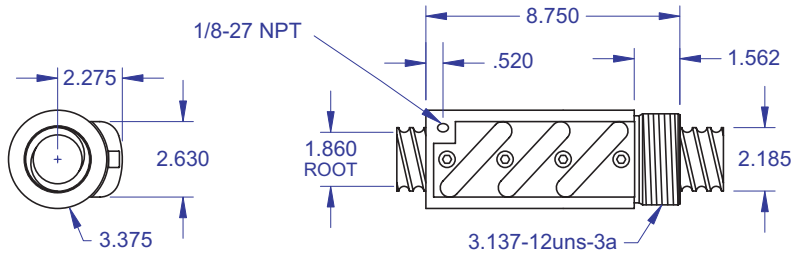


R60A

Standard Ball Screw

Ball Screw Part #	R-60A-1
Ball Nut Part #	R-60A-2
Dynamic Load (lbs) for 1,000,000 (in)	29,700
Max. Static Load (lbs)	213,000
Ballnut Weight (lbs)	11.22
Ballscrew Weight (lbs/ft)	11.30

Standard Ball Screw

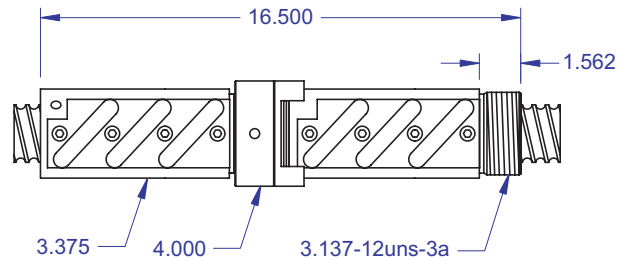


Ball bearing nominal diameter 3/8". Average ball quantity per nut is 237.

Preloaded Ball Screw

Preload Screw Part #	RP-60A-1
Preload Ballnut Part #	RP-60A-2
Dynamic Load (lbs)** for 1,000,000 (in)	26,730
Max. Static Load (lbs)**	210,030
Recommended Preload	2,970
Maximum Preload	8,910
Ballnut Weight (lbs)	22.60

Preloaded Ball Screw

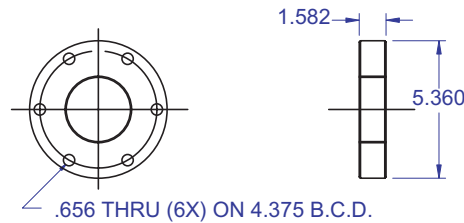


**Based on recommended Preload.

Accessories

Mounting Flange Part #	R-60A-3
Wiper Kit Part #	R-60A-4

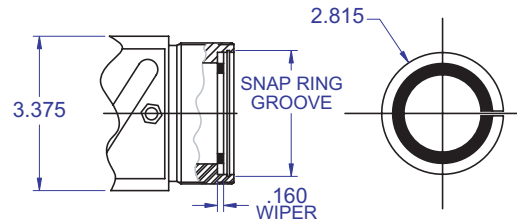
Mounting Flange



Technical Info:

Bearing Mounts and Machined Ends	page 80-85
Lubrication information	page 15
On-line Resources (configurable CAD drawings and more)	page 3

Wiper Kit



WANT MORE PRODUCTS?

R/S Visit our web site at www.rockfordballscrew.com.

The specifications and data in this publication are deemed to be accurate and reliable and are subject to change without notice.

PLEASE NOTE

Technical drawings and information can vary depending on which Bearing Mount is desired. See pages 80-85 for details.

