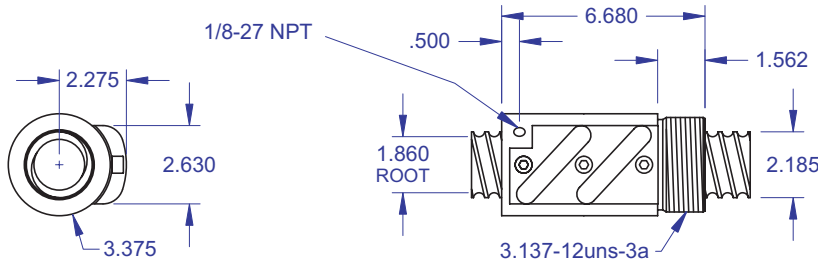


# BALL SCREWS

## R60/R63

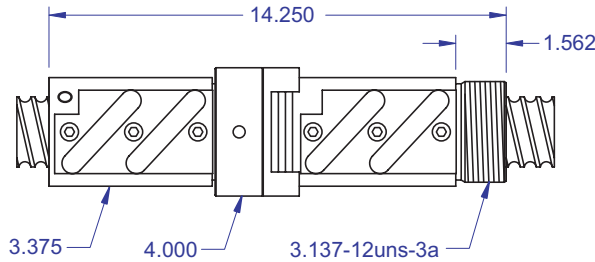


### Standard Ball Screw

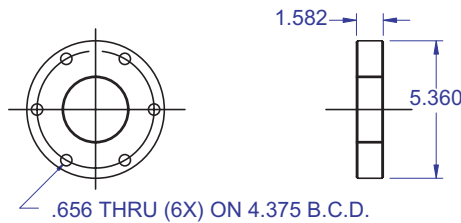


Ball bearing nominal diameter 3/8". Average ball quantity per nut is 154.

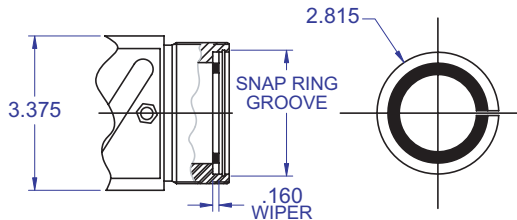
### Preloaded Ball Screw



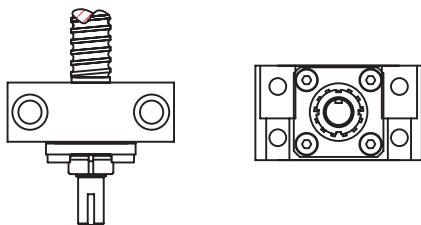
### Mounting Flange



### Wiper Kit



### Bearing Mount



**PLEASE NOTE**  
 Technical drawings and information can vary depending on which Bearing Mount is desired. See pages 80-85 for details.

# 2.250 x .500

DIAMETER

LEAD

### Standard Ball Screw

Ball Screw Part # RH	R-60-1	
Ball Screw Part # LH		R-63-1
Ball Nut Part # RH	R-60-2	
Ball Nut Part # LH		R-63-2
Dynamic Load (lbs) for 1,000,000 (in)	19,800	19,800
Max. Static Load (lbs)	142,500	142,500
Ballnut Weight (lbs)	8.25	8.25
Ballscrew Weight (lbs/ft)	10.92	10.92

### Preloaded Ball Screw

Preload Screw Part # RH	RP-60-1	
Preload Screw Part # LH		RP-63-1
Preload Ballnut Part # RH	RP-60-2	
Preload Ballnut Part # LH		RP-63-2
Dynamic Load (lbs)** for 1,000,000 (in)	17,820	17,820
Max. Static Load (lbs)**	140,520	140,520
Recommended Preload	1,980	1,980
Maximum Preload	5,940	5,940
Ballnut Weight (lbs)	16.50	16.50

\*\*Based on recommended Preload.

### Accessories

Mounting Flange Part #	R-60-3	R-63-3
Wiper Kit Part #	R-60-4	R-63-4

### Technical Info:

Bearing Mounts and Machined Ends	page 80-85
Lubrication information	page 15
On-line Resources (configurable CAD drawings and more)	page 3

### WANT MORE PRODUCTS?

Visit our web site at **R/B/S**  
[www.rockfordballscrew.com](http://www.rockfordballscrew.com)

The specifications and data in this publication are deemed to be accurate and reliable and are subject to change without notice.