

2.000 x .500
DIAMETER LEAD

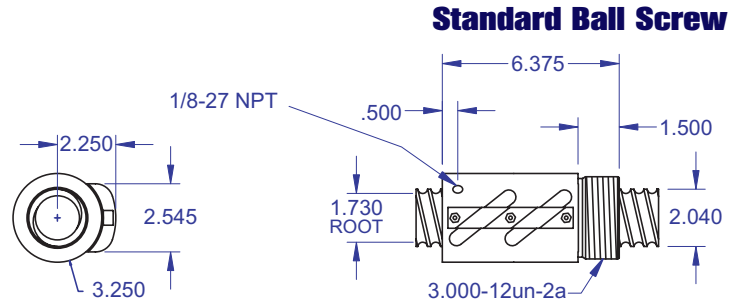
BALL SCREWS

R62



Standard Ball Screw

Ball Screw Part #	R-62-1
Ball Nut Part #	R-62-2
Dynamic Load (lbs) for 1,000,000 (in)	18,000
Max. Static Load (lbs)	130,000
Ballnut Weight (lbs)	8.15
Ballscrew Weight (lbs/ft)	9.36



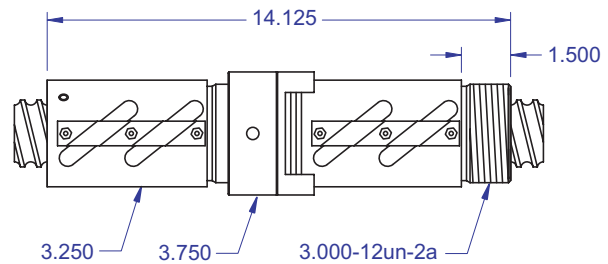
Ball bearing nominal diameter 3/8". Average ball quantity per nut is 152.

Preloaded Ball Screw

Preload Screw Part #	RP-62-1
Preload Ballnut Part #	RP-62-2
Dynamic Load (lbs)** for 1,000,000 (in)	16,200
Max. Static Load (lbs)**	128,200
Recommended Preload	1,800
Maximum Preload	5,400
Ballnut Weight (lbs)	16.30

**Based on recommended Preload.

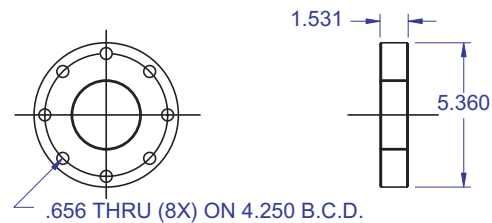
Preloaded Ball Screw



Accessories

Mounting Flange Part #	R-62-3
Wiper Kit Part #	R-62-4

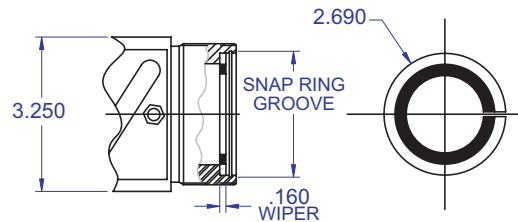
Mounting Flange



Technical Info:

Bearing Mounts and Machined Ends	page 80-85
Lubrication information	page 15
On-line Resources (configurable CAD drawings and more)	page 3

Wiper Kit



WANT MORE PRODUCTS?

R/B/S Visit our web site at www.rockfordballscrew.com.

The specifications and data in this publication are deemed to be accurate and reliable and are subject to change without notice.

PLEASE NOTE
Technical drawings and information can vary depending on which Bearing Mount is desired. See pages 80-85 for details.

