

**1.500 x 1.000**  
DIAMETER LEAD

# BALL SCREWS

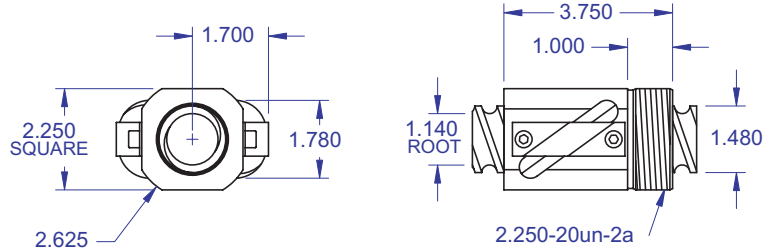
## R55/R56



### Standard Ball Screw

Ball Screw Part # RH	R-55-1	
Ball Screw Part # LH		R-56-1
Ball Nut Part # RH	R-55-2	
Ball Nut Part # LH		R-56-2
Dynamic Load (lbs) for 1,000,000 (in)	8,000	8,000
Max. Static Load (lbs)	34,500	34,500
Ballnut Weight (lbs)	2.64	2.64
Ballscrew Weight (lbs/ft)	4.52	4.52

### Standard Ball Screw

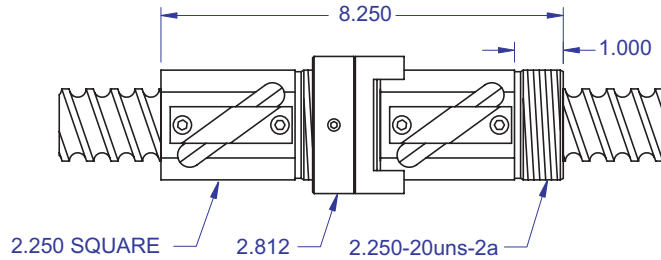


Ball bearing nominal diameter 11/32". Average ball quantity per nut is 64.

### Preloaded Ball Screw

Preload Screw Part #	RP-55-1	
Preload Screw Part #		RP-56-1
Preload Ballnut Part #	RP-55-2	
Preload Ballnut Part #		RP-56-2
Dynamic Load (lbs)** for 1,000,000 (in)	7,200	7,200
Max. Static Load (lbs)**	33,700	33,700
Recommended Preload	800	800
Maximum Preload	2,400	2,400
Ballnut Weight (lbs)	5.28	5.28

### Preloaded Ball Screw

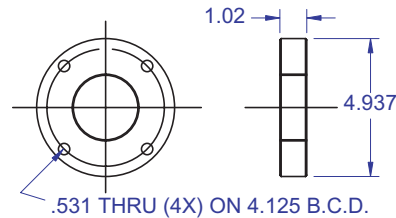


\*\*Based on recommended Preload.

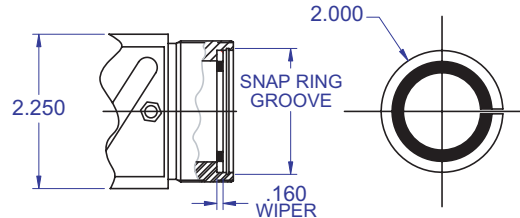
### Accessories

Mounting Flange Part #	R-55-3	R-56-3
Wiper Kit Part #	R-55-4	R-56-4
Flange Wiper Cap Part#	R-20-4F	R-21-4F

### Mounting Flange



### (2 wipers & 2 snap rings) Wiper Kit

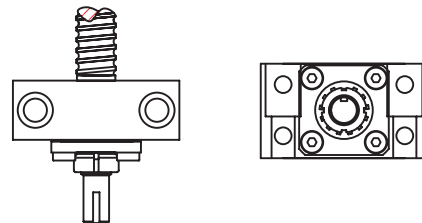


### Technical Info:

Bearing Mounts and Machined Ends page 80-85  
Lubrication information page 15  
On-line Resources page 3  
(configurable CAD drawings and more)

### Bearing Mount

**PLEASE NOTE**  
Technical drawings and information can vary depending on which Bearing Mount is desired. See pages 80-85 for details.



### WANT MORE PRODUCTS?

**R/B/S** Visit our web site at [www.rockfordballscrew.com](http://www.rockfordballscrew.com).

The specifications and data in this publication are deemed to be accurate and reliable and are subject to change without notice.