

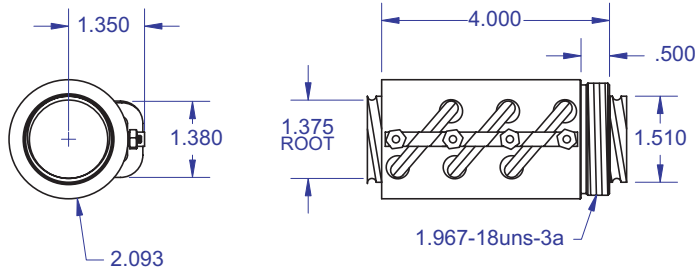
BALL SCREWS

R54A



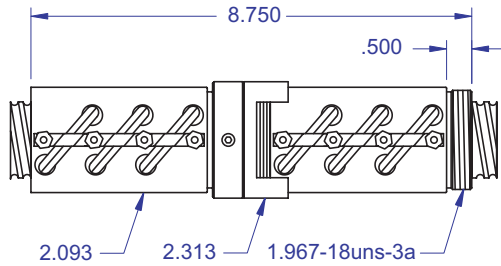
1.500 x .250
DIAMETER LEAD

Standard Ball Screw



Ball bearing nominal diameter 5/32". Average ball quantity per nut is 390.

Preloaded Ball Screw



Standard Ball Screw

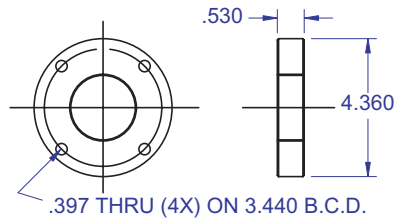
Ball Screw Part #	R-54A-1
Ball Nut Part #	R-54A-2
Dynamic Load (lbs) for 1,000,000 (in)	6,400
Max. Static Load (lbs)	67,200
Ballnut Weight (lbs)	1.64
Ballscrew Weight (lbs/ft)	5.60

Preloaded Ball Screw

Preload Screw Part #	RP-54A-1
Preload Ballnut Part #	RP-54A-2
Dynamic Load (lbs)** for 1,000,000 (in)	5,760
Max. Static Load (lbs)**	66,560
Recommended Preload	640
Maximum Preload	1,920
Ballnut Weight (lbs)	3.28

**Based on recommended Preload.

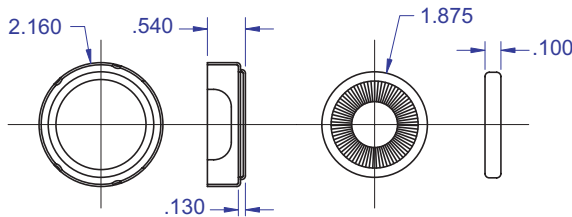
Mounting Flange



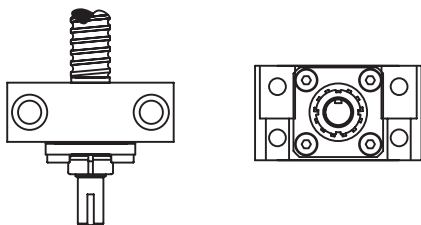
Accessories

Mounting Flange Part #	R-54A-3
Wiper Kit Part #	R-54A-4
Flange Wiper Cap Part#	R-54A-4F

Wiper Kit



Bearing Mount



PLEASE NOTE

Technical drawings and information can vary depending on which Bearing Mount is desired. See pages 80-85 for details.

Technical Info:

Bearing Mounts and Machined Ends	page 80-85
Lubrication information	page 15
On-line Resources (configurable CAD drawings and more)	page 3

WANT MORE PRODUCTS?

Visit our web site at **R/B/S**
www.rockfordballscrew.com. ●/●/●

The specifications and data in this publication are deemed to be accurate and reliable and are subject to change without notice.