

1.500 x .250
DIAMETER LEAD

BALL SCREWS

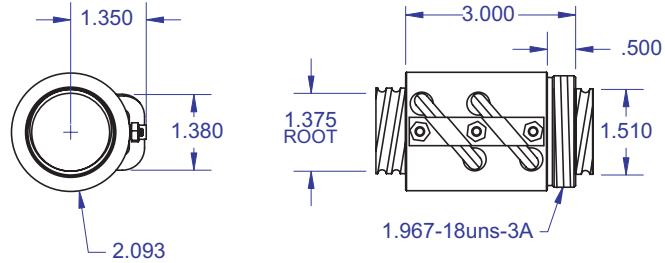
R53/R54



Standard Ball Screw

Ball Screw Part # LH	R-53-1	
Ball Screw Part # RH		R-54-1
Ball Nut Part # LH	R-53-2	
Ball Nut Part # RH		R-54-2
Dynamic Load (lbs) for 1,000,000 (in)	4,250	4,250
Max. Static Load (lbs)	44,800	44,800
Ballnut Weight (lbs)	1.23	1.23
Ballscrew Weight (lbs/ft)	5.60	5.60

Standard Ball Screw

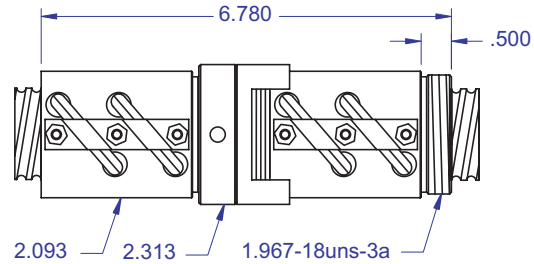


Ball bearing nominal diameter 5/32". Average ball quantity per nut is 260.

Preloaded Ball Screw

Preload Screw Part # LH	RP-53-1	
Preload Screw Part # RH		RP-54-1
Preload Ballnut Part # LH	RP-53-2	
Preload Ballnut Part # RH		RP-54-2
Dynamic Load (lbs)** for 1,000,000 (in)	3,825	3,825
Max. Static Load (lbs)**	44,375	44,375
Recommended Preload	425	425
Maximum Preload	1,275	1,275
Ballnut Weight (lbs)	2.46	2.46

Preloaded Ball Screw

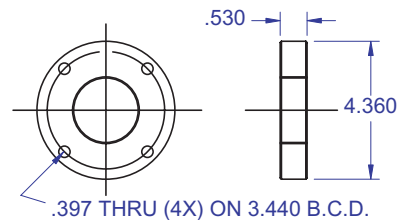


**Based on recommended Preload.

Accessories

Mounting Flange Part #	R-53-3	R-54-3
Wiper Kit Part #	R-53-4	R-54-4
Flange Wiper Cap Part#	R-53-4F	R-54-4F

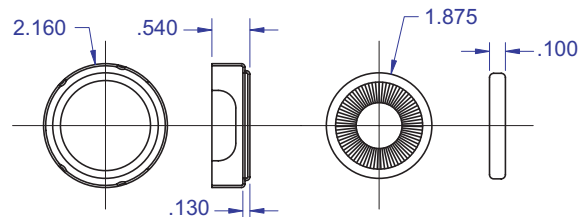
Mounting Flange



Technical Info:

Bearing Mounts and Machined Ends page 80-85
Lubrication information page 15
On-line Resources page 3
(configurable CAD drawings and more)

Wiper Kit



WANT MORE PRODUCTS?

R/B/S Visit our web site at
www.rockfordballscrew.com.

The specifications and data in this publication are deemed to be accurate and reliable and are subject to change without notice.

PLEASE NOTE

Technical drawings and information can vary depending on which Bearing Mount is desired. See pages 80-85 for details.

