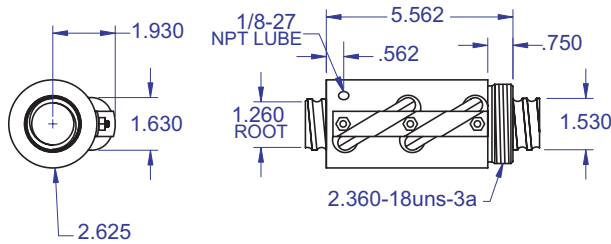


BALL SCREWS

R50A/R51A

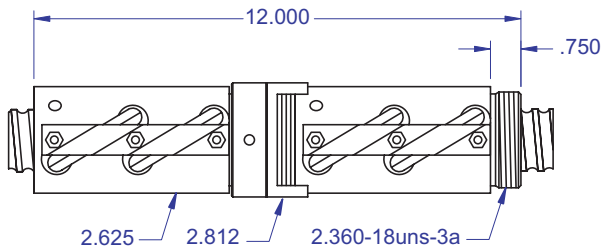


Standard Ball Screw

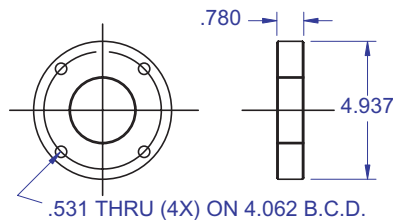


Ball bearing nominal diameter 5/16". Average ball quantity per nut is 140.

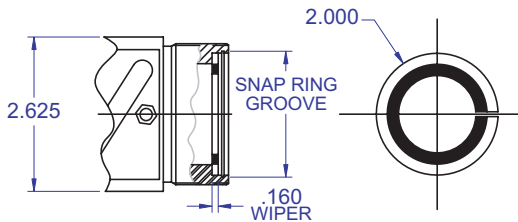
Preloaded Ball Screw



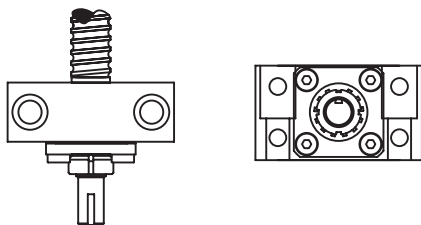
Mounting Flange



Wiper Kit



Bearing Mount



PLEASE NOTE

Technical drawings and information can vary depending on which Bearing Mount is desired. See pages 80-85 for details.

1.500 x .500

DIAMETER

LEAD

Standard Ball Screw

Ball Screw Part # RH	R-50A-1	
Ball Screw Part # LH		R-51A-1
Ball Nut Part # RH	R-50A-2	
Ball Nut Part # LH		R-51A-2
Dynamic Load (lbs) for 1,000,000 (in)	12,900	12,900
Max. Static Load (lbs)	94,000	94,000
Ballnut Weight (lbs)	4.99	4.99
Ballscrew Weight (lbs/ft)	5.34	5.34

Preloaded Ball Screw

Preload Screw Part # RH	RP-50A-1	
Preload Screw Part # LH		RP-51A-1
Preload Ballnut Part # RH	RP-50A-2	
Preload Ballnut Part # LH		RP-51A-2

Dynamic Load (lbs)** for 1,000,000 (in)	11,610	11,610
Max. Static Load (lbs)**	92,710	92,710
Recommended Preload	1,290	1,290
Maximum Preload	3,870	3,870
Ballnut Weight (lbs)	9.98	9.98

**Based on recommended Preload.

Accessories

Mounting Flange Part #	R-50A-3	R-51A-3
Wiper Kit Part #	R-50A-4	R-51A-4

Technical Info:

Bearing Mounts and Machined Ends	page 80-85
Lubrication information	page 15
On-line Resources (configurable CAD drawings and more)	page 3

WANT MORE PRODUCTS?

Visit our web site at **R/B/S**
www.rockfordballscrew.com. ●/●/●

The specifications and data in this publication are deemed to be accurate and reliable and are subject to change without notice.