

**1.150 x .200**  
DIAMETER LEAD

# BALL SCREWS

**R45/R46/R47**



## Standard Ball Screw

Ball Screw Part # RH	R-45-1	R-46-1*
Ball Screw Part # LH	R-47-1	
Ball Nut Part # RH	R-45-2	R-46-2*
Ball Nut Part # LH	R-47-2	
Dynamic Load (lbs) for 1,000,000 (in)	2,450	490
Max. Static Load (lbs)	24,500	4,600
Ballnut Weight (lbs)	0.81	0.81
Ballscrew Weight (lbs/ft)	3.10	3.10

\*Stainless Steel

## Preloaded Ball Screw

Preload Screw Part #	RP-45-1	RP-46-1*
Preload Screw Part #	RP-47-1	
Preload Ballnut Part #	RP-45-2	RP-46-2*
Preload Ballnut Part #	RP-47-2	
Dynamic Load (lbs)** for 1,000,000 (in)	2,205	2,205
Max. Static Load (lbs)**	24,255	24,255
Recommended Preload	245	49
Maximum Preload	735	145
Ballnut Weight (lbs)	1.62	1.62

\*\*Based on recommended Preload.

## Accessories

Mounting Flange Part #	R-47-3	R-46-3*
Wiper Kit Part #	R-47-4	R-46-4*
Flange Wiper Cap Part#	R-45-4F	R-46-4F

## Technical Info:

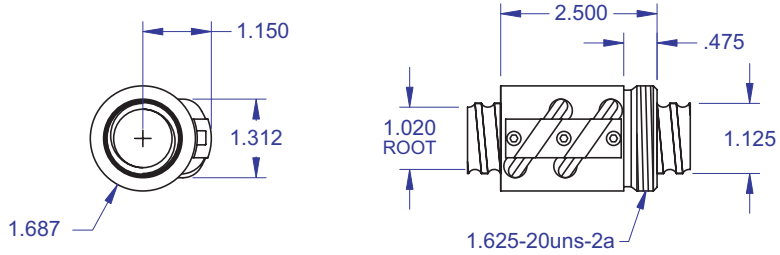
Bearing Mounts and Machined Ends page 80-85  
 Lubrication information page 15  
 On-line Resources page 3  
 (configurable CAD drawings and more)

## WANT MORE PRODUCTS?

**R/B/S** Visit our web site at  
[www.rockfordballscrew.com](http://www.rockfordballscrew.com)

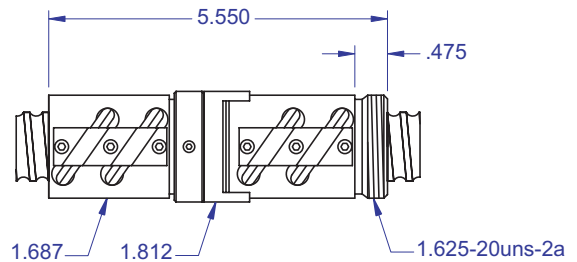
The specifications and data in this publication are deemed to be accurate and reliable and are subject to change without notice.

## Standard Ball Screw

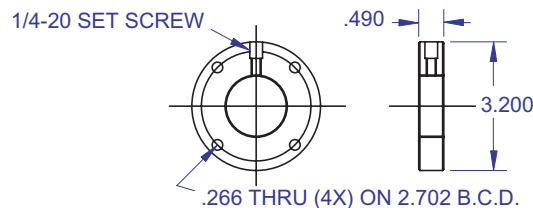


Ball bearing nominal diameter 1/8". Average ball quantity per nut is 244.

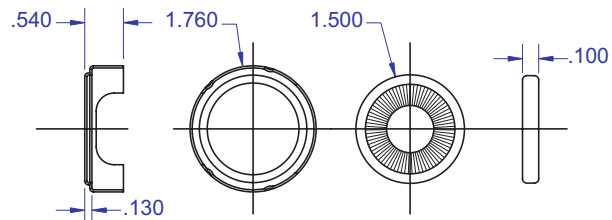
## Preloaded Ball Screw



## Mounting Flange



## Wiper Kit



## Bearing Mount

**PLEASE NOTE**  
 Technical drawings and information can vary depending on which Bearing Mount is desired. See pages 80-85 for details.

