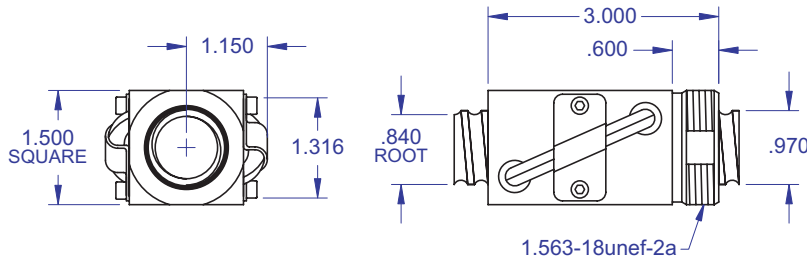


# BALL SCREWS

## R44

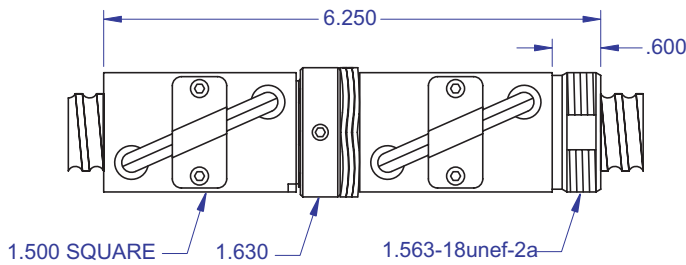


### Standard Ball Screw

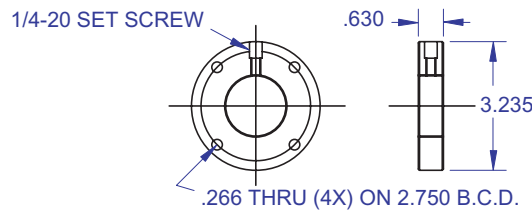


Ball bearing nominal diameter 5/32". Average ball quantity per nut is 98.

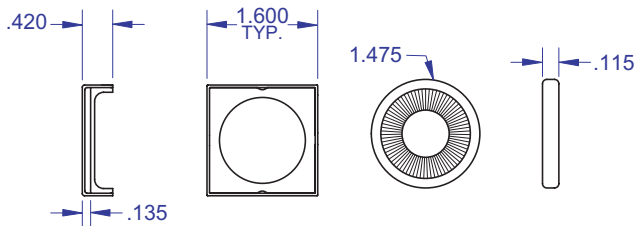
### Preloaded Ball Screw



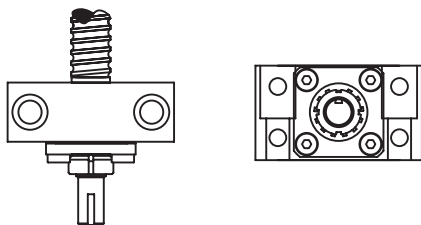
### Mounting Flange



### Wiper Kit



### Bearing Mount



#### PLEASE NOTE

Technical drawings and information can vary depending on which Bearing Mount is desired. See pages 80-85 for details.

# 1.000 x 1.000

DIAMETER

LEAD

### Standard Ball Screw

Ball Screw Part #	R-44-1
Ball Nut Part #	R-44-2
Dynamic Load (lbs) for 1,000,000 (in)	2,300
Max. Static Load (lbs)	11,500
Ballnut Weight (lbs)	1.12
Ballscrew Weight (lbs/ft)	2.17

### Preloaded Ball Screw

Preload Screw Part #	RP-44-1
Preload Ballnut Part #	RP-44-2
Dynamic Load (lbs)** for 1,000,000 (in)	2,070
Max. Static Load (lbs)**	11,270
Recommended Preload	230
Maximum Preload	690
Ballnut Weight (lbs)	2.24

\*\*Based on recommended Preload.

### Accessories

Mounting Flange Part #	R-44-3
Wiper Kit Part #	R-44-4
Flange Wiper Cap Part#	R-44-4F

### Technical Info:

Bearing Mounts and Machined Ends	page 80-85
Lubrication information	page 15
On-line Resources (configurable CAD drawings and more)	page 3

### WANT MORE PRODUCTS?

Visit our web site at **R/B/S**  
www.rockfordballscrew.com. ●●●

The specifications and data in this publication are deemed to be accurate and reliable and are subject to change without notice.