

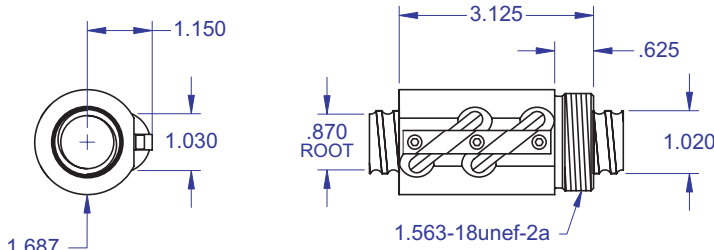
BALL SCREWS



R42

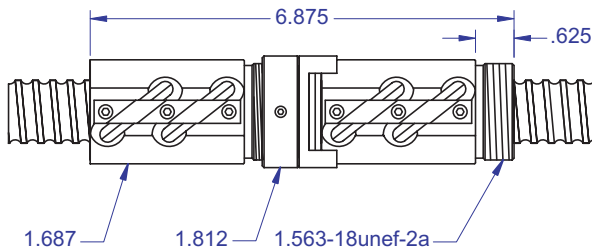
1.000 x .250
DIAMETER LEAD

Standard Ball Screw - R40RF



Ball bearing nominal diameter 5/32". Average ball quantity per nut is 178.

Preloaded Ball Screw



Standard Ball Screw

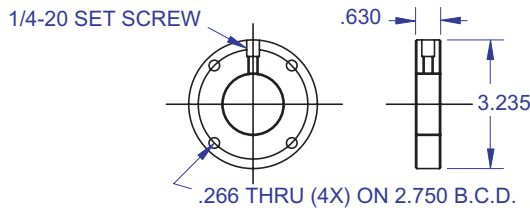
Ball Screw Part #	R-42-1
Ball Nut Part #	R-42-2
Dynamic Load (lbs) for 1,000,000 (in)	3,450
Max. Static Load (lbs)	30,000
Ballnut Weight (lbs)	1.06
Ballscrew Weight (lbs/ft)	2.40

Preloaded Ball Screw

Preload Screw Part #	RP-42-1
Preload Ballnut Part #	RP-42-2
Dynamic Load (lbs)** for 1,000,000 (in)	3,105
Max. Static Load (lbs)**	29,655
Recommended Preload	345
Maximum Preload	1,035
Ballnut Weight (lbs)	2.12

**Based on recommended Preload.

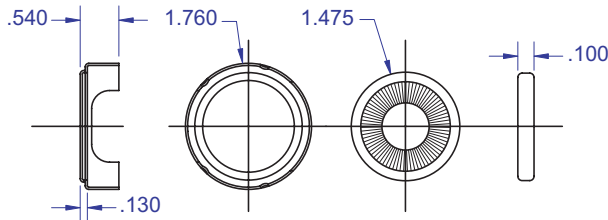
Mounting Flange



Accessories

Mounting Flange Part #	R-42-3
Wiper Kit Part #	R-42-4
Flange Wiper Cap Part#	R-42-4F

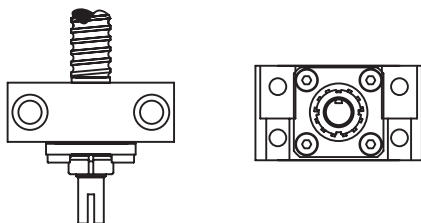
Wiper Kit



Technical Info:

Bearing Mounts and Machined Ends	page 80-85
Lubrication information	page 15
On-line Resources (configurable CAD drawings and more)	page 3

Bearing Mount



PLEASE NOTE
Technical drawings and information can vary depending on which Bearing Mount is desired. See pages 80-85 for details.

WANT MORE PRODUCTS?

Visit our web site at **R/B/S**
www.rockfordballscrew.com. ●/●/●

The specifications and data in this publication are deemed to be accurate and reliable and are subject to change without notice.