

1.000 x .250
DIAMETER LEAD

BALL SCREWS

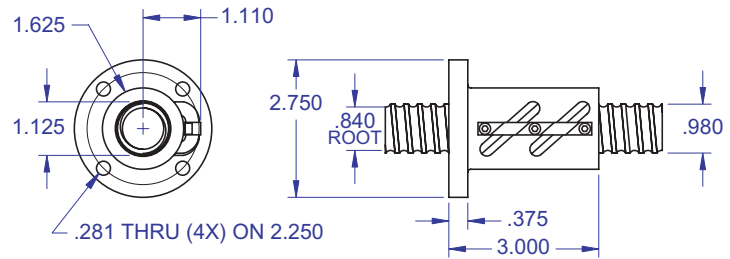
R40RF/R41LF



Standard Ball Screw

Ball Screw Part #	R-40RF-1
Ball Nut Part #	R-40RF-2
Dynamic Load (lbs) for 1,000,000 (in)	3,250
Max. Static Load (lbs)	26,000
Ballnut Weight (lbs)	1.54
Ballscrew Weight (lbs/ft)	2.18

Standard Ball Screw



Ball bearing nominal diameter 5/32". Average ball quantity per nut is 170.

Standard Ball Screw

Ball Screw Part #	R-41LF-1
Ball Nut Part #	R-41LF-2
Dynamic Load (lbs) for 1,000,000 (in)	3,250
Max. Static Load (lbs)	26,000
Ballnut Weight (lbs)	1.54
Ballscrew Weight (lbs/ft)	2.18

Accessories

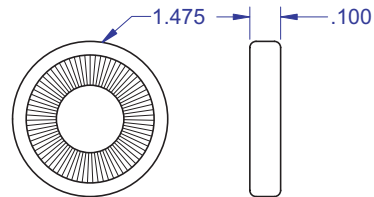
Wiper Kit Part #	R-40B-4
------------------	---------



Technical Info:

Bearing Mounts and Machined Ends	page 80-85
Lubrication information	page 15
On-line Resources	page 3
(configurable CAD drawings and more)	

Wiper Kit



WANT MORE PRODUCTS?

R/B/S Visit our web site at
www.rockfordballscrew.com.

The specifications and data in this publication are deemed to be accurate and reliable and are subject to change without notice.

Bearing Mount

PLEASE NOTE

Technical drawings and information can vary depending on which Bearing Mount is desired. See pages 80-85 for details.

