

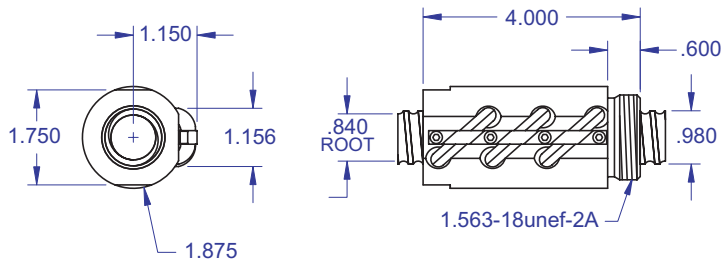
BALL SCREWS

R40B



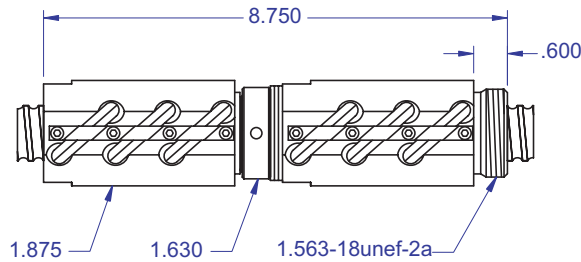
1.000 x .250
DIAMETER LEAD

Standard Ball Screw

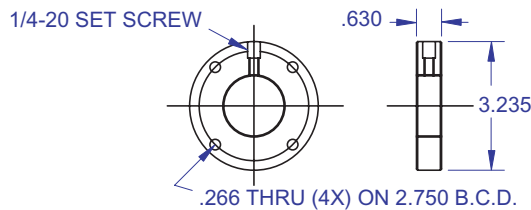


Ball bearing nominal diameter 5/32". Average ball quantity per nut is 255.

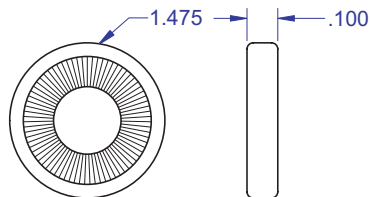
Preloaded Ball Screw



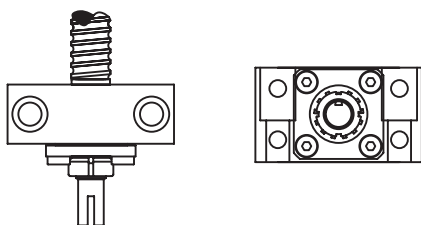
Mounting Flange



Wiper Kit



Bearing Mount



PLEASE NOTE

Technical drawings and information can vary depending on which Bearing Mount is desired. See pages 80-85 for details.

Standard Ball Screw

| | |
|---------------------------------------|---------|
| Ball Screw Part # | R-40B-1 |
| Ball Nut Part # | R-40B-2 |
| Dynamic Load (lbs) for 1,000,000 (in) | 4,500 |
| Max. Static Load (lbs) | 39,000 |
| Ballnut Weight (lbs) | 1.92 |
| Ballscrew Weight (lbs/ft) | 2.18 |

Preloaded Ball Screw

| | |
|-----------------------------------------|----------|
| Preload Screw Part # | RP-40B-1 |
| Preload Ballnut Part # | RP-40B-2 |
| Dynamic Load (lbs)** for 1,000,000 (in) | 4,050 |
| Max. Static Load (lbs)** | 38,550 |
| Recommended Preload | 450 |
| Maximum Preload | 1,350 |
| Ballnut Weight (lbs) | 3.84 |

**Based on recommended Preload.

Accessories

| | |
|------------------------|----------|
| Mounting Flange Part # | R-40B-3 |
| Wiper Kit Part # | R-40B-4 |
| Flange Wiper Cap Part# | R-40B-4F |

Technical Info:

| | |
|--------------------------------------------------------|------------|
| Bearing Mounts and Machined Ends | page 80-85 |
| Lubrication information | page 15 |
| On-line Resources (configurable CAD drawings and more) | page 3 |

WANT MORE PRODUCTS?

Visit our web site at **R/B/S**
www.rockfordballscrew.com. ●/●/●

The specifications and data in this publication are deemed to be accurate and reliable and are subject to change without notice.