

**1.000 x .250**  
DIAMETER LEAD

# BALL SCREWS

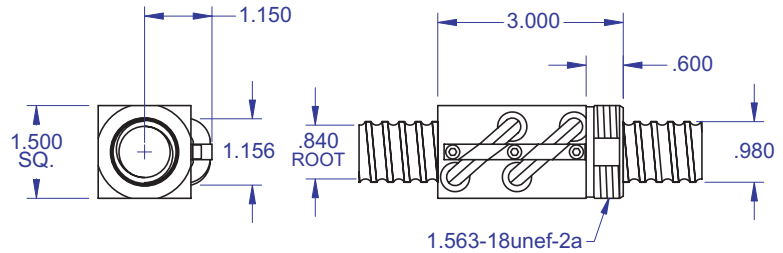
## R40A



### Standard Ball Screw

Ball Screw Part #	R-40A-1
Ball Nut Part #	R-40A-2
Dynamic Load (lbs) for 1,000,000 (in)	3,250
Max. Static Load (lbs)	26,000
Ballnut Weight (lbs)	1.12
Ballscrew Weight (lbs/ft)	2.18

### Standard Ball Screw

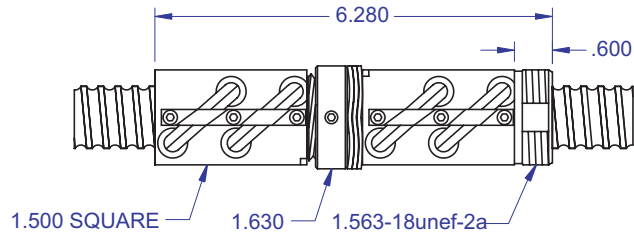


Ball bearing nominal diameter 5/32". Average ball quantity per nut is 170.

### Preloaded Ball Screw

Preload Screw Part #	RP-40A-1
Preload Ballnut Part #	RP-40A-2
Dynamic Load (lbs)** for 1,000,000 (in)	2,925
Max. Static Load (lbs)**	25,675
Recommended Preload	325
Maximum Preload	975
Ballnut Weight (lbs)	2.24

### Preloaded Ball Screw

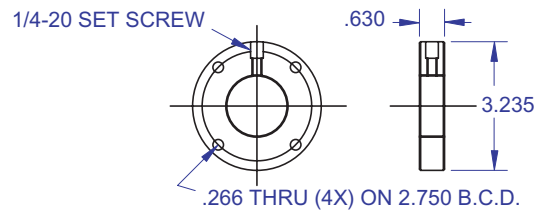


\*\*Based on recommended Preload.

### Accessories

Mounting Flange Part #	R-40A-3
Wiper Kit Part #	R-40A-4
Flange Wiper Cap Part#	R-40-4F

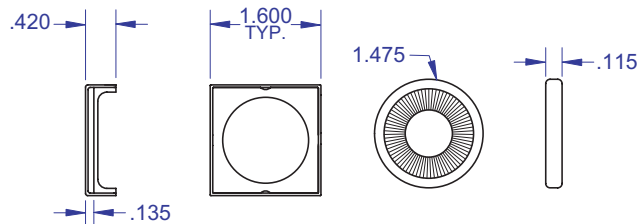
### Mounting Flange



### Technical Info:

Bearing Mounts and Machined Ends page 80-85  
 Lubrication information page 15  
 On-line Resources page 3  
 (configurable CAD drawings and more)

### Wiper Kit



### WANT MORE PRODUCTS?

**R/B/S** Visit our web site at  
[www.rockfordballscrew.com](http://www.rockfordballscrew.com)

The specifications and data in this publication are deemed to be accurate and reliable and are subject to change without notice.

#### PLEASE NOTE

Technical drawings and information can vary depending on which Bearing Mount is desired. See pages 80-85 for details.

