

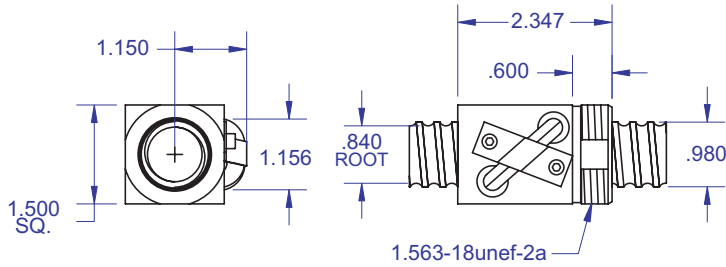
# BALL SCREWS

## R40/R41



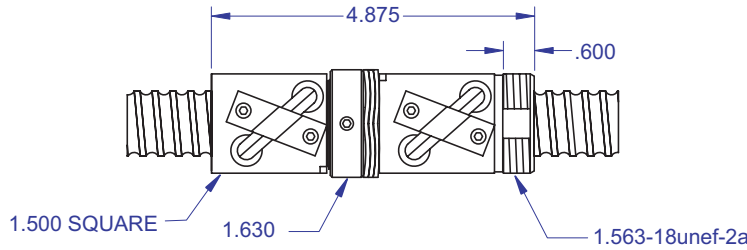
**1.000 x .250**  
DIAMETER LEAD

### Standard Ball Screw

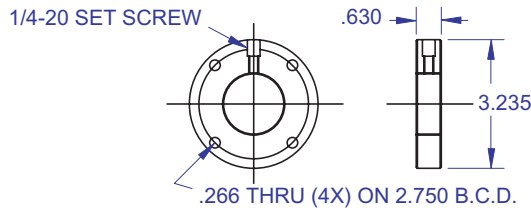


Ball bearing nominal diameter 5/32". Average ball quantity per nut is 85.

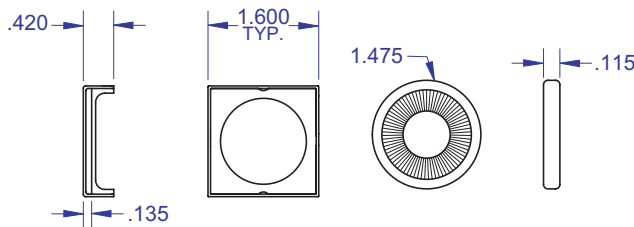
### Preloaded Ball Screw



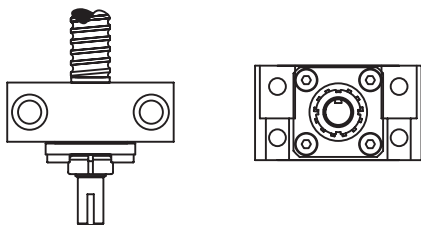
### Mounting Flange



### Wiper Kit



### Bearing Mount



#### PLEASE NOTE

Technical drawings and information can vary depending on which Bearing Mount is desired. See pages 80-85 for details.

### Standard Ball Screw

Ball Screw Part # RH	R-40-1	
Ball Screw Part # LH		R-41-1
Ball Nut Part # RH	R-40-2	
Ball Nut Part # LH		R-41-2
Dynamic Load (lbs) for 1,000,000 (in)	1,625	1,625
Max. Static Load (lbs)	13,000	13,000
Ballnut Weight (lbs)	0.83	0.83
Ballscrew Weight (lbs/ft)	2.18	2.18

### Preloaded Ball Screw

Preload Screw Part # RH	RP-40-1	
Preload Screw Part # LH		RP-41-1
Preload Ballnut Part # RH	RP-40-2	
Preload Ballnut Part # LH		RP-41-2
Dynamic Load (lbs)** for 1,000,000 (in)	1,462	1,462
Max. Static Load (lbs)**	12,837	12,837
Recommended Preload	163	163
Maximum Preload	489	489
Ballnut Weight (lbs)	1.66	1.66

\*\*Based on recommended Preload.

### Accessories

Mounting Flange Part #	R-40-3	R-41-3
Wiper Kit Part #	R-40-4	R-41-4
Flange Wiper Cap Part#	R-40-4F	R-41-4F

### Technical Info:

Bearing Mounts and Machined Ends	page 80-85
Lubrication information	page 15
On-line Resources (configurable CAD drawings and more)	page 3

### WANT MORE PRODUCTS?

Visit our web site at **R/B/S**  
www.rockfordballscrew.com. ●●●

The specifications and data in this publication are deemed to be accurate and reliable and are subject to change without notice.