

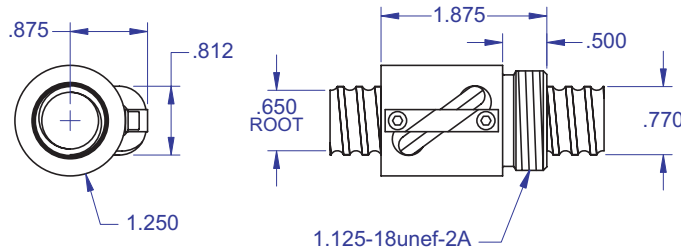
# BALL SCREWS

## R35/R36



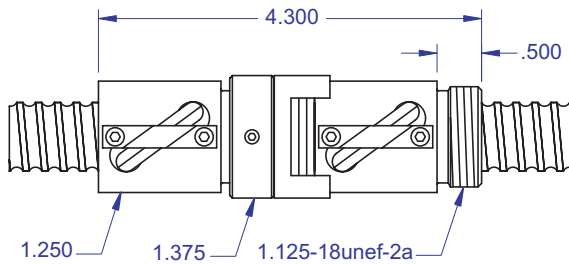
**.750 x .200**  
DIAMETER LEAD

### Standard Ball Screw

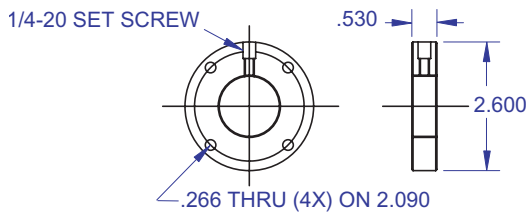


Ball bearing nominal diameter 1/8". Average ball quantity per nut is 84.

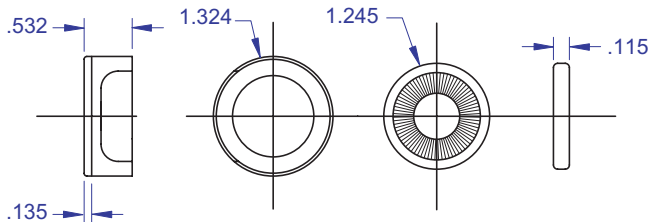
### Preloaded Ball Screw



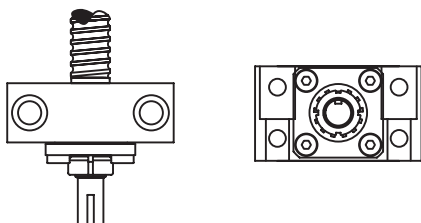
### Mounting Flange



### Wiper Kit



### Bearing Mount



#### PLEASE NOTE

Technical drawings and information can vary depending on which Bearing Mount is desired. See pages 80-85 for details.

### Standard Ball Screw

Ball Screw Part #	R-35-1	R-36-1*
Ball Nut Part #	R-35-2	R-36-2*
Dynamic Load (lbs) for 1,000,000 (in)	950	160
Max. Static Load (lbs)	8,900	1,350
Ballnut Weight (lbs)	0.33	0.33
Ballscrew Weight (lbs/ft)	1.35	1.35

\*Stainless Steel

### Preloaded Ball Screw

Preload Screw Part #	RP-35-1	RP-36-1*
Preload Ballnut Part #	RP-35-2	RP-36-2*
Dynamic Load (lbs)** for 1,000,000 (in)	855	144
Max. Static Load (lbs)**	8,805	1,334
Recommended Preload	95	16
Maximum Preload	285	48
Ballnut Weight (lbs)	0.66	0.66

\*\*Based on recommended Preload.

### Accessories

Mounting Flange Part #	R-35-3	R-36-3
Wiper Kit Part #	R-35-4	R-36-4
Flange Wiper Cap Part#	R-35-4F	R-36-4F

### Technical Info:

Bearing Mounts and Machined Ends	page 80-85
Lubrication information	page 15
On-line Resources (configurable CAD drawings and more)	page 3

### WANT MORE PRODUCTS?

Visit our web site at **R/B/S**  
www.rockfordballscrew.com. ●/●/●

The specifications and data in this publication are deemed to be accurate and reliable and are subject to change without notice.