

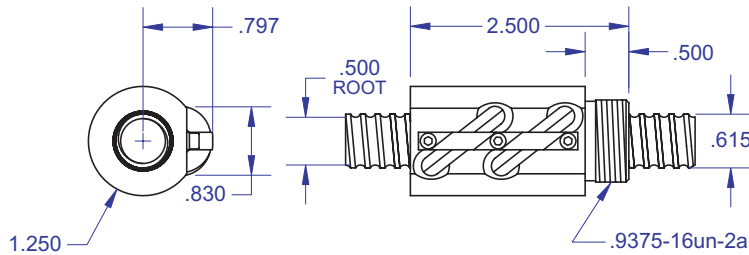
BALL SCREWS

R30A



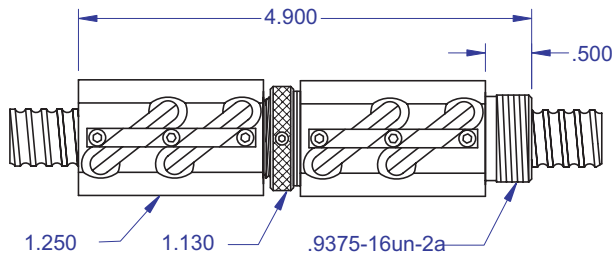
.631 x .200
DIAMETER LEAD

Standard Ball Screw



Ball bearing nominal diameter 1/8". Average ball quantity per nut is 134.

Preloaded Ball Screw



Standard Ball Screw

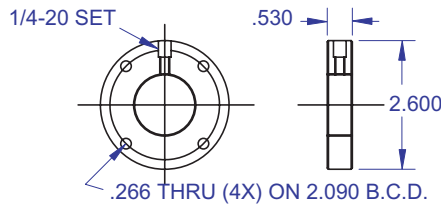
Ball Screw Part #	R-30A-1
Ball Nut Part #	R-30A-2
Dynamic Load (lbs) for 1,000,000 (in)	1,650
Max. Static Load (lbs)	9,000
Ballnut Weight (lbs)	0.51
Ballscrew Weight (lbs/ft)	0.83

Preloaded Ball Screw

Preload Screw Part #	RP-30A-1
Preload Ballnut Part #	RP-30A-2
Dynamic Load (lbs)** for 1,000,000 (in)	1,485
Max. Static Load (lbs)**	8,335
Recommended Preload	165
Maximum Preload	495
Ballnut Weight (lbs)	1.02

**Based on recommended Preload.

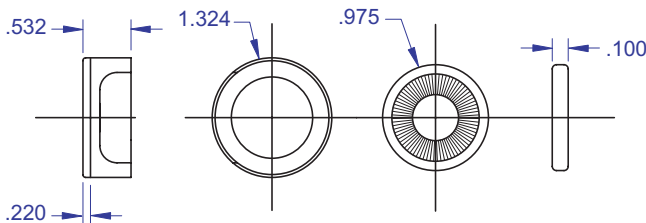
Mounting Flange



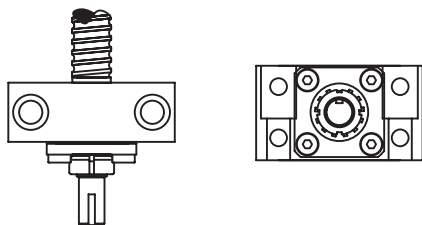
Accessories

Mounting Flange Part #	R-30A-3
Wiper Kit Part #	R-30A-4
Flange Wiper Cap Part#	R-30A-4F

Wiper Kit



Bearing Mount



PLEASE NOTE

Technical drawings and information can vary depending on which Bearing Mount is desired. See pages 80-85 for details.

Technical Info:

Bearing Mounts and Machined Ends	page 80-85
Lubrication information	page 15
On-line Resources (configurable CAD drawings and more)	page 3

WANT MORE PRODUCTS?

Visit our web site at **R/B/S**
www.rockfordballscrew.com. ●/●/●

The specifications and data in this publication are deemed to be accurate and reliable and are subject to change without notice.