

.631 x .200
DIAMETER LEAD

BALL SCREWS

R30/R31/R32



Standard Ball Screw

Ball Screw Part # RH	R-30-1	R-32-1*
Ball Screw Part # LH	R-31-1	
Ball Nut Part # RH	R-30-2	R-32-2*
Ball Nut Part # LH	R-31-2	
Dynamic Load (lbs) for 1,000,000 (in)	825	170
Max. Static Load (lbs)	6,250	1,250
Ballnut Weight (lbs)	0.26	0.26
Ballscrew Weight (lbs/ft)	0.83	0.83

*Stainless Steel

Preloaded Ball Screw

Preload Screw Part # RH	RP-30-1	RP-32-1*
Preload Screw Part # LH	RP-31-1	
Preload Ballnut Part # RH	RP-30-2	RP-32-2*
Preload Nut Part # LH	RP-31-2	
Dynamic Load (lbs)** for 1,000,000 (in)	742	153
Max. Static Load (lbs)**	6,167	1,233
Recommended Preload	83	17
Maximum Preload	249	51
Ballnut Weight (lbs)	0.52	0.52

**Based on recommended Preload.

Accessories

Mounting Flange Part # RH	R-30-3	R-32-3
Mounting Flange Part # LH	R-31-3	
Wiper Kit Part # RH	R-30-4	R-32-4
Flange Wiper Cap Part#	R-30-4F R-31-4F	R-32-4F

Technical Info:

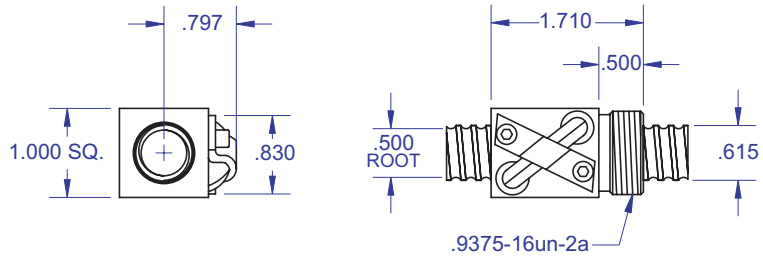
Bearing Mounts and Machined Ends	page 80-85
Lubrication information	page 15
On-line Resources	page 3
(configurable CAD drawings and more)	

WANT MORE PRODUCTS?

R/B/S Visit our web site at
www.rockfordballscrew.com.

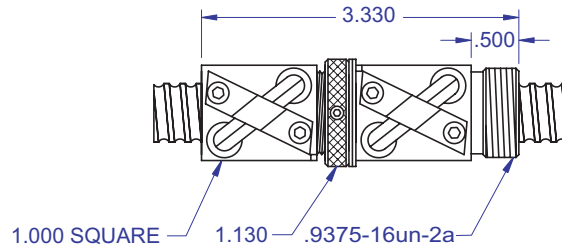
The specifications and data in this publication are deemed to be accurate and reliable and are subject to change without notice.

Standard Ball Screw

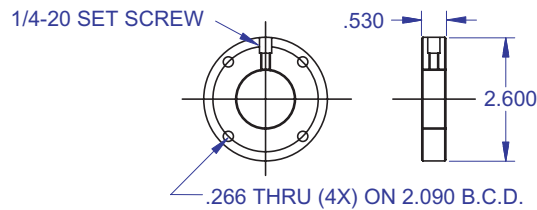


Ball bearing nominal diameter 1/8". Average ball quantity per nut is 67.

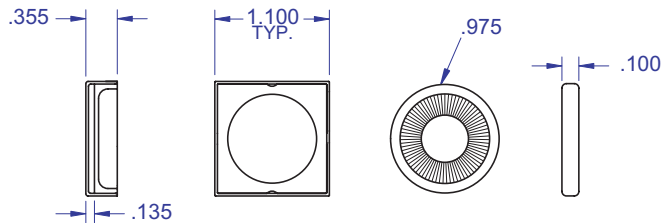
Preloaded Ball Screw



Mounting Flange



Wiper Kit



Bearing Mount

PLEASE NOTE
Technical drawings and information can vary depending on which Bearing Mount is desired. See pages 80-85 for details.

