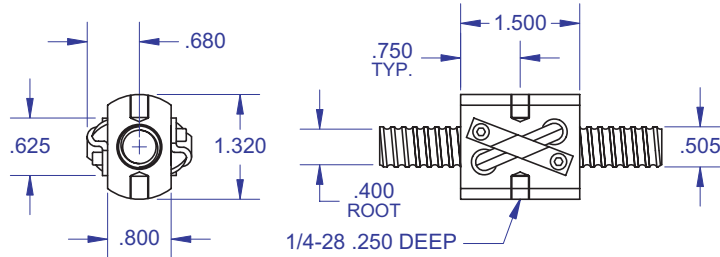


BALL SCREWS

R22/R23

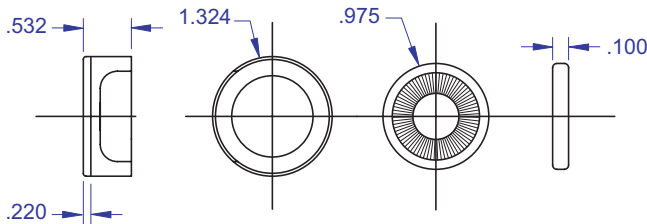


Standard Ball Screw

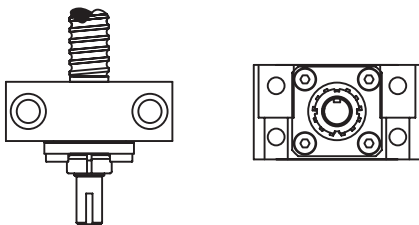


Ball bearing nominal diameter 1/8". Average ball quantity per nut is 70.

Wiper Kit



Bearing Mount



PLEASE NOTE
 Technical drawings and information can vary depending on which Bearing Mount is desired. See pages 80-85 for details.

.500 x .500
 DIAMETER LEAD

Standard Ball Screw

Ball Screw Part # RH	R-22-1*	R-23-1
Ball Nut Part # RH	R-22-2*	R-23-2
Dynamic Load (lbs) for 1,000,000 (in)	140	850
Max. Static Load (lbs)	750	4,150
Ballnut Weight (lbs)	0.30	0.30
Ballscrew Weight (lbs/ft)	0.58	0.58

*Stainless Steel

Accessories

Wiper Kit Part #	R-22-4	R-23-4
------------------	--------	--------

Technical Info:

Bearing Mounts and Machined Ends page 80-85
 Lubrication information page 15
 On-line Resources page 3 (configurable CAD drawings and more)

WANT MORE PRODUCTS?

Visit our web site at **R/B/S**
www.rockfordballscrew.com

The specifications and data in this publication are deemed to be accurate and reliable and are subject to change without notice.