

.500 x .500
DIAMETER LEAD

BALL SCREWS

R20/R21



Standard Ball Screw

Ball Screw Part # RH	R-20-1	R-21-1*
Ball Nut Part # RH	R-20-2	R-21-2*
Dynamic Load (lbs) for 1,000,000 (in)	850	140
Max. Static Load (lbs)	4,150	750
Ballnut Weight (lbs)	0.25	0.25
Ballscrew Weight (lbs/ft)	0.58	0.58

*Stainless Steel

Preloaded Ball Screw

Preload Screw Part #	RP-20-1	RP-21-1*
Preload Ballnut Part #	RP-20-2	RP-21-2*
Dynamic Load (lbs)** for 1,000,000 (in)	765	126
Max. Static Load (lbs)**	4,065	736
Recommended Preload	85	14
Maximum Preload	255	42
Ballnut Weight (lbs)	0.50	0.50

**Based on recommended Preload.

Accessories

Mounting Flange Part #	R-20-3	R-21-3*
Wiper Kit Part #	R-20-4	R-21-4
Flange Wiper Cap Part#	R-20-4F	R-21-4F

Technical Info:

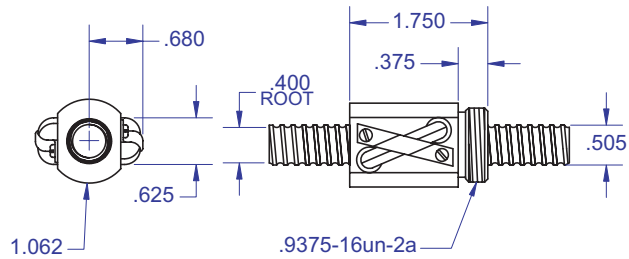
Bearing Mounts and Machined Ends page 80-85
 Lubrication information page 15
 On-line Resources page 3
 (configurable CAD drawings and more)

WANT MORE PRODUCTS?

R/B/S Visit our web site at
www.rockfordballscrew.com

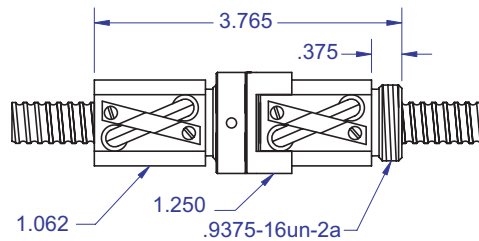
The specifications and data in this publication are deemed to be accurate and reliable and are subject to change without notice.

Standard Ball Screw

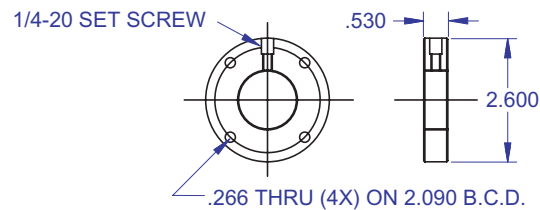


Ball bearing nominal diameter 1/8". Average ball quantity per nut is 70.

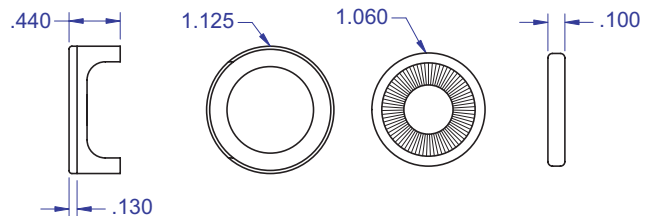
Preloaded Ball Screw



Mounting Flange



Wiper Kit (2 wipers and rear end cap)



Bearing Mount

PLEASE NOTE

Technical drawings and information can vary depending on which Bearing Mount is desired. See pages 80-85 for details.

