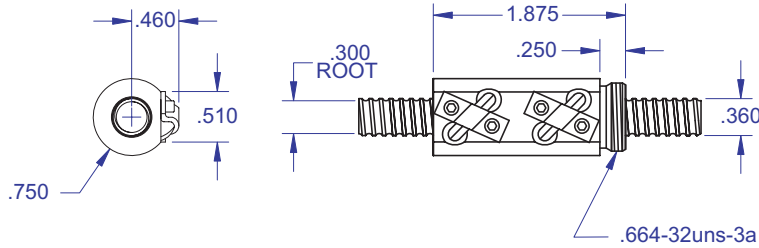


BALL SCREWS

R11/R16

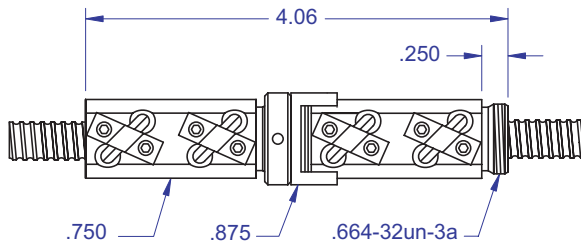


Standard Ball Screw

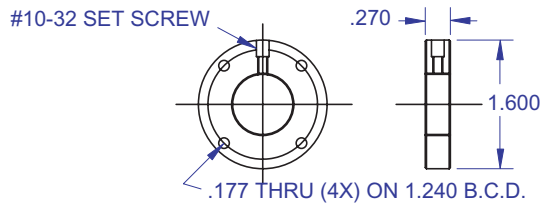


Ball bearing nominal diameter 1/16". Average ball quantity per nut is 124.

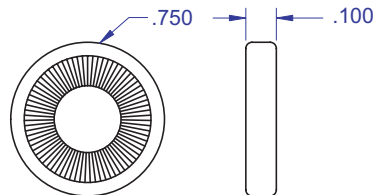
Preloaded Ball Screw



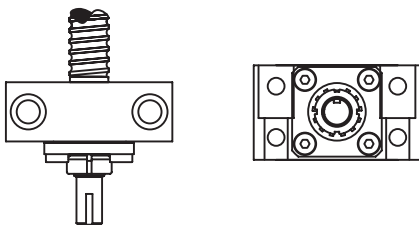
Mounting Flange



Wiper Kit



Bearing Mount



PLEASE NOTE

Technical drawings and information can vary depending on which Bearing Mount is desired. See pages 80-85 for details.

.375 x .125
DIAMETER LEAD

Standard Ball Screw

Ball Screw Part # RH	R-11-1	R-16-1*
Ball Nut Part # RH	R-11-2	R-16-2*
Dynamic Load (lbs) for 1,000,000 (in)	300	50
Max. Static Load (lbs)	2,600	460
Ballnut Weight (lbs)	0.15	0.15
Ballscrew Weight (lbs/ft)	0.31	0.31

*Stainless Steel

Preloaded Ball Screw

Preload Screw Part #	RP-11-1	RP-16-1*
Preload Ballnut Part #	RP-11-2	RP-16-2*
Dynamic Load (lbs)** for 1,000,000 (in)	270	45
Max. Static Load (lbs)**	2,570	455
Recommended Preload	30	5
Maximum Preload	90	15
Ballnut Weight (lbs)	0.30	0.30

**Based on recommended Preload.

Accessories

Mounting Flange Part #	R-11-3	R-16-3*
Wiper Kit Part #	R-11-4	R-16-4

Technical Info:

Bearing Mounts and Machined Ends	page 80-85
Lubrication information	page 15
On-line Resources (configurable CAD drawings and more)	page 3

WANT MORE PRODUCTS?

Visit our web site at **R/B/S**
www.rockfordballscrew.com. ●/●/●

The specifications and data in this publication are deemed to be accurate and reliable and are subject to change without notice.