

**.375 x .125**  
DIAMETER LEAD

# BALL SCREWS

## R10/R15



### Standard Ball Screw

Ball Screw Part # RH	R-10-1	R-15-1*
Ball Nut Part # RH	R-10-2	R-15-2*
Dynamic Load (lbs) for 1,000,000 (in)	150	25
Max. Static Load (lbs)	1,300	230
Ballnut Weight (lbs)	0.08	0.08
Ballscrew Weight (lbs/ft)	0.31	0.31

\*Stainless Steel

### Preloaded Ball Screw

Preload Screw Part # RH	RP-10-1	RP-15-1*
Preload Ballnut Part # RH	RP-10-2	RP-15-2*
Dynamic Load (lbs)** for 1,000,000 (in)	135	23
Max. Static Load (lbs)**	1,285	228
Recommended Preload	15	3
Maximum Preload	45	8
Ballnut Weight (lbs)	0.16	0.16

\*\*Based on recommended Preload.

### Accessories

Mounting Flange Part #	R-10-3	R-15-3
Wiper Kit Part #	R-10-4	R-15-4

### Technical Info:

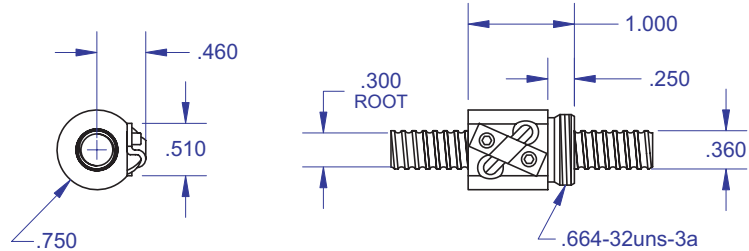
Bearing Mounts and Machined Ends page 80-85  
 Lubrication information page 15  
 On-line Resources page 3  
 (configurable CAD drawings and more)

### WANT MORE PRODUCTS?

**R/B/S** Visit our web site at [www.rockfordballscrew.com](http://www.rockfordballscrew.com).

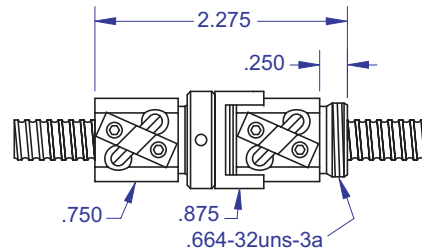
The specifications and data in this publication are deemed to be accurate and reliable and are subject to change without notice.

### Standard Ball Screw

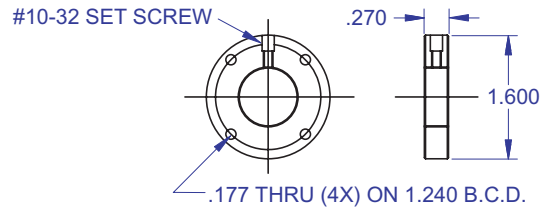


Ball bearing nominal diameter 1/16". Average ball quantity per nut is 62.

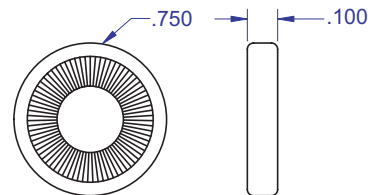
### Preloaded Ball Screw



### Mounting Flange



### (2 brush wipers) Wiper Kit



### Bearing Mount

**PLEASE NOTE**  
 Technical drawings and information can vary depending on which Bearing Mount is desired. See pages 80-85 for details.

