

# 1 3/4 INCH DIAMETER

# ACME SCREWS



## Dimensional Specifications

Screw Size	1 3/4-4
# of Starts	1
Lead	0.250
Threads Per Inch	4
Min. Root Diameter	1.446
Weight (lbs/ft)	7.04
Screw Material	1018CRS
Nut Material	#660 Bronze

## Performance Specifications

Dynamic Capacity (lbs)	15,300
Static Capacity (lbs)	49,900
Torque to raise 1 lb. (in-lbs)	0.175
Forward Driving Efficiency	23%
Thread Class	2G

## Part Numbers

Screw	A117504-1
Nut	A117504-2
Flange	A117504-3

## Technical Info:

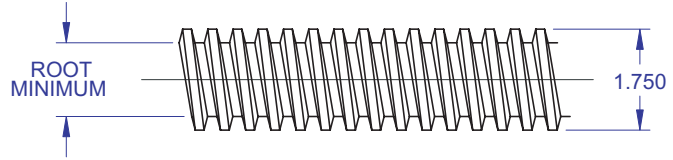
Bearing Mounts and Machined Ends	page 80-85
Lubrication information	page 77
On-line Resources	page 3
(configurable CAD drawings and more)	

## WANT MORE PRODUCTS?

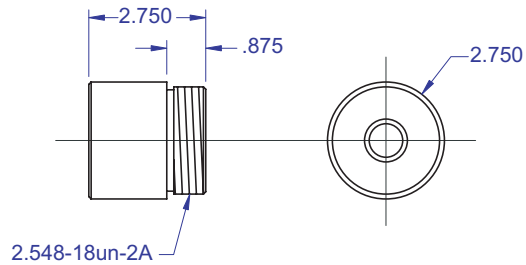
**R/B/S** Visit our web site at  
 [www.rockfordballscrew.com](http://www.rockfordballscrew.com).

The specifications and data in this publication are deemed to be accurate and reliable and are subject to change without notice.

## Standard ACME Screw



## Standard ACME Nut



## Standard ACME Flange

