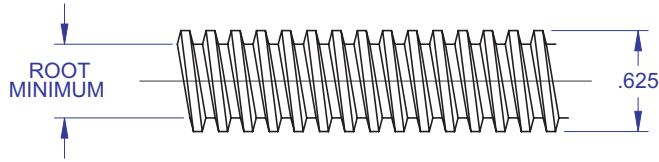


ACME SCREWS

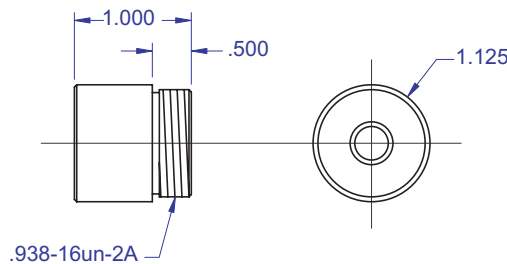


5/8 INCH DIAMETER

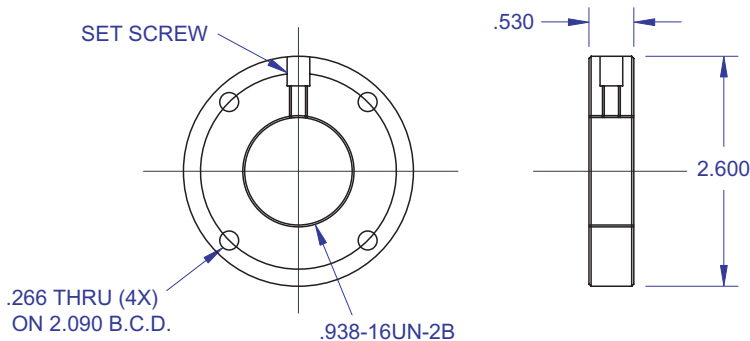
Standard ACME Screw



Standard ACME Nut



Standard ACME Flange



Dimensional Specifications

Screw Size	5/8-8	5/8-10	5/8-10
# of Starts	1	1	2
Lead	0.125	0.100	0.200
Threads Per Inch	8	10	10
Min. Root Dia.	0.457	0.483	0.483
Weight (lbs/ft)	0.85	0.82	0.84
Screw Material	1018CRS	1018CRS	1018CRS
Nut Material	#660 Bronze	#660 Bronze	#660 Bronze

Performance Specifications

Dynamic Capacity (lbs)	1,900	1,900	1,900
Static Capacity (lbs)	6,250	6,250	6,250
Torque to raise 1 lb. (in-lbs)	0.067	0.064	0.077
Forward Driving Efficiency	30%	25%	42%
Thread Class	2G	2G	2G

Part Numbers

Screw	A106208-1	A106210-1	A206210-1
Nut	A106208-2	A106210-2	A206210-2
Flange	A106208-3	A106210-3	A206210-3

Technical Info:

Bearing Mounts and Machined Ends page 80-85
 Lubrication information page 77
 On-line Resources page 3
 (configurable CAD drawings and more)

WANT MORE PRODUCTS?

R/B/S Visit our web site at
www.rockfordballscrew.com

The specifications and data in this publication are deemed to be accurate and reliable and are subject to change without notice.